



ESG

HARVEST
EXCHANGE TRADED FUNDS

TSX **HUIB**

Harvest US Investment Grade Bond Plus ETF

The Harvest US Investment Grade Bond Plus ETF's primarily invests in an actively managed portfolio of US Investment Grade Bonds. Amundi Pioneer is a leading global fixed income manager with a team of dedicated US fixed income specialists, an award winning ESG screening approach and is the sub-advisor to the ETF. The ETF pays a monthly distribution based on the Yield to Maturity.

The Harvest US Investment Grade Bond Plus ETF's investment objective is to provide Unitholders with monthly cash distributions and the opportunity for capital appreciation by investing primarily in investment grade corporate debt issued by United States corporations.

Fund Facts

TSX Ticker:	HUIB
CUSIP:	41755K106
Inception Date:	January 07, 2020
Distribution Frequency:	Monthly
Distribution Method:	Cash
Currency:	CAD/Hedged
Risk Rating:	Low

Investment Highlights

- **A Core Fixed Income Solution**
- **US Investment Grade Corporate Bonds with Low Equity Market Correlation**
- **Actively Managed by a Dominant Fixed Income Manager**
- **Leading Global ESG Screening (SRI Approach certified by Anfor)**
- **Focus on credit analysis versus duration bet**
- **BBB+ Average Portfolio Rating Required**
- **Low Risk Rating (ETF Facts)**

Portfolio Metrics

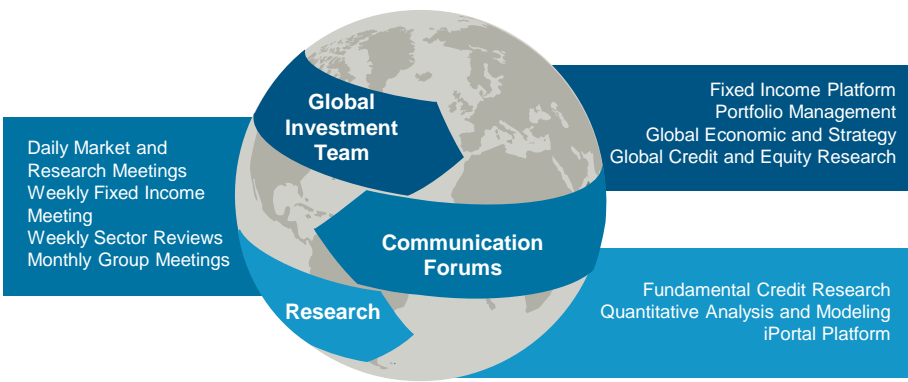
Distribution Frequency:	Monthly
Management Fee:	0.48%
Portfolio Target Rating	BBB+

Sub-Advisor Profile

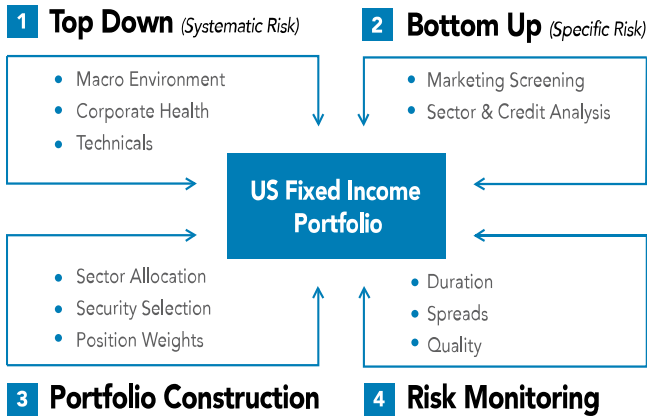
Amundi Pioneer <small>ASSET MANAGEMENT</small>	
Amundi* Global AUM:	US\$1,693 B
Amundi Pioneer US Fixed Income AUM:	US\$51.5 B
US Credit Portfolio Managers:	4
US Credit Analysts:	10
ESG Analysts:	18

*Figures as of June 30, 2019

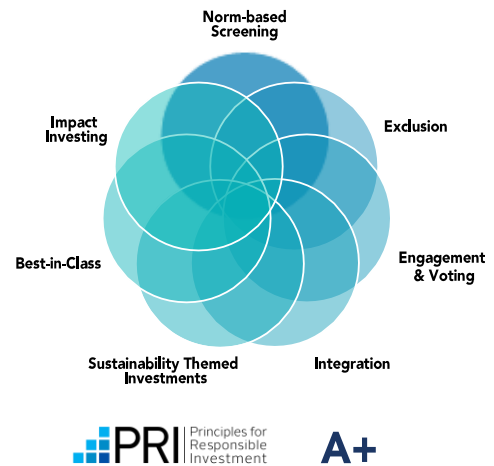
Proven Asset Managers



Portfolio & Credit Selection Process



Award Winning Proprietary ESG Screening



1.866.998.8298

harvestportfolios.com

HARVEST
EXCHANGE TRADED FUNDS

Commissions, management fees and expenses all may be associated with investing in HARVEST Exchange Traded Funds (managed by Harvest Portfolios Group Inc.). Please read the relevant prospectus before investing. The funds are not guaranteed, their values change frequently and past performance may not be repeated. Tax, investment and all other decisions should be made with guidance from a qualified professional. Certain statements included in this communication constitute forward-looking statements, including, but not limited to, those identified by the expressions "expect", "intend", "will" and similar expressions to the extent they relate to the Investment Fund. The forward-looking statements are not historical facts but reflect the Fund's, Harvest and the Manager of the Fund's current expectations regarding future results or events. These forward looking statements are subject to a number of risks and uncertainties that could cause actual results or events to differ materially from current expectations. Although the Fund, Harvest and the Manager of the Fund believes that the assumptions inherent in the forward-looking statements are reasonable, forward-looking statements are not guarantees of future performance and, accordingly, readers are cautioned not to place undue reliance on such statements due to the inherent uncertainty therein. The Fund, Harvest and the Manager of the Fund undertakes no obligation to update publicly or otherwise revise any forward-looking statement or information whether as a result of new information, future events or other such factors which affect this information, except as required by law.